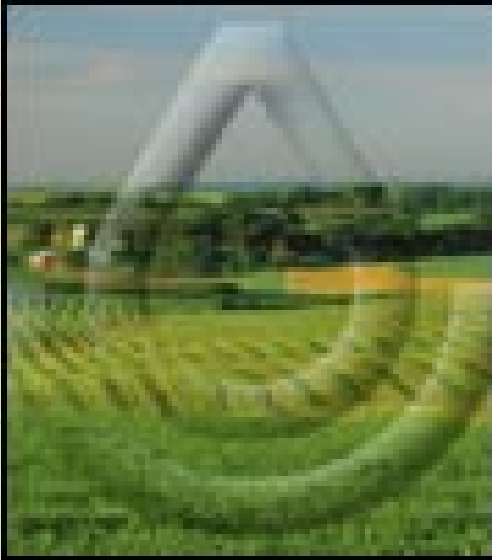




United States Department of Agriculture
Natural Resources Conservation Service



FARM BILL 2002

Colorado Conservation Provisions

**Conserving Natural Resources on Colorado's
Privately Owned Farmland**



Farm Bill 2002

- Most significant commitment of resources toward conservation in our Nation's history
- Opportunities for farmers and ranchers to reach conservation goals
- Variety of incentives to producers and landowners interested in conservation programs

Farm Bill 2002

The Farm Bill program is one of the most effective tools NRCS has in place to address Colorado's top priority natural resource issues including:

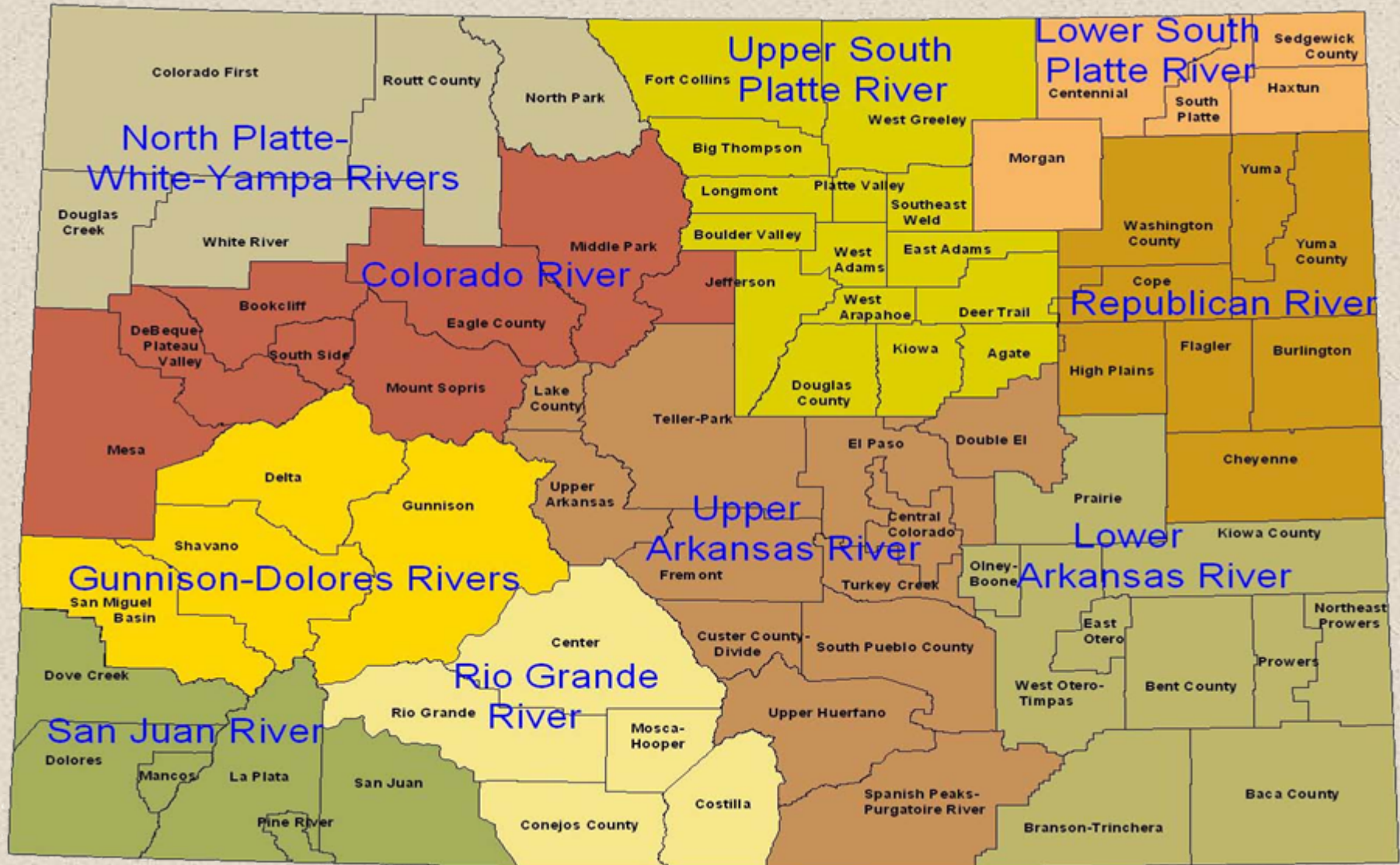
- **Water Quantity**
- **Rangeland Health**
- **Water Quality
(Animal Nutrients)**
- **Soil Health**
- **Drought Recovery**



Watershed Approach

- Ten major watershed basins
- Recognizes resource diversity
- Locally led by conservation districts
- Customized programs
- Ranking based on similar systems

Colorado Conservation Districts and Watershed Associations



Farm Bill 2002 Conservation Programs

Cost-Share Programs

- **Environmental Quality Incentives Program (EQIP)**
- **EQIP Ground and Surface Water Conservation (GSWC)**
- **Wildlife Habitat Incentives Program (WHIP)**



Farm Bill 2002

Conservation Programs

Easement Programs

- Farm and Ranchland Protection Program (FRPP)
- Grassland Reserve Program (GRP)
- Wetlands Reserve Program (WRP)



Stewardship Program

- Conservation Security Program (CSP)



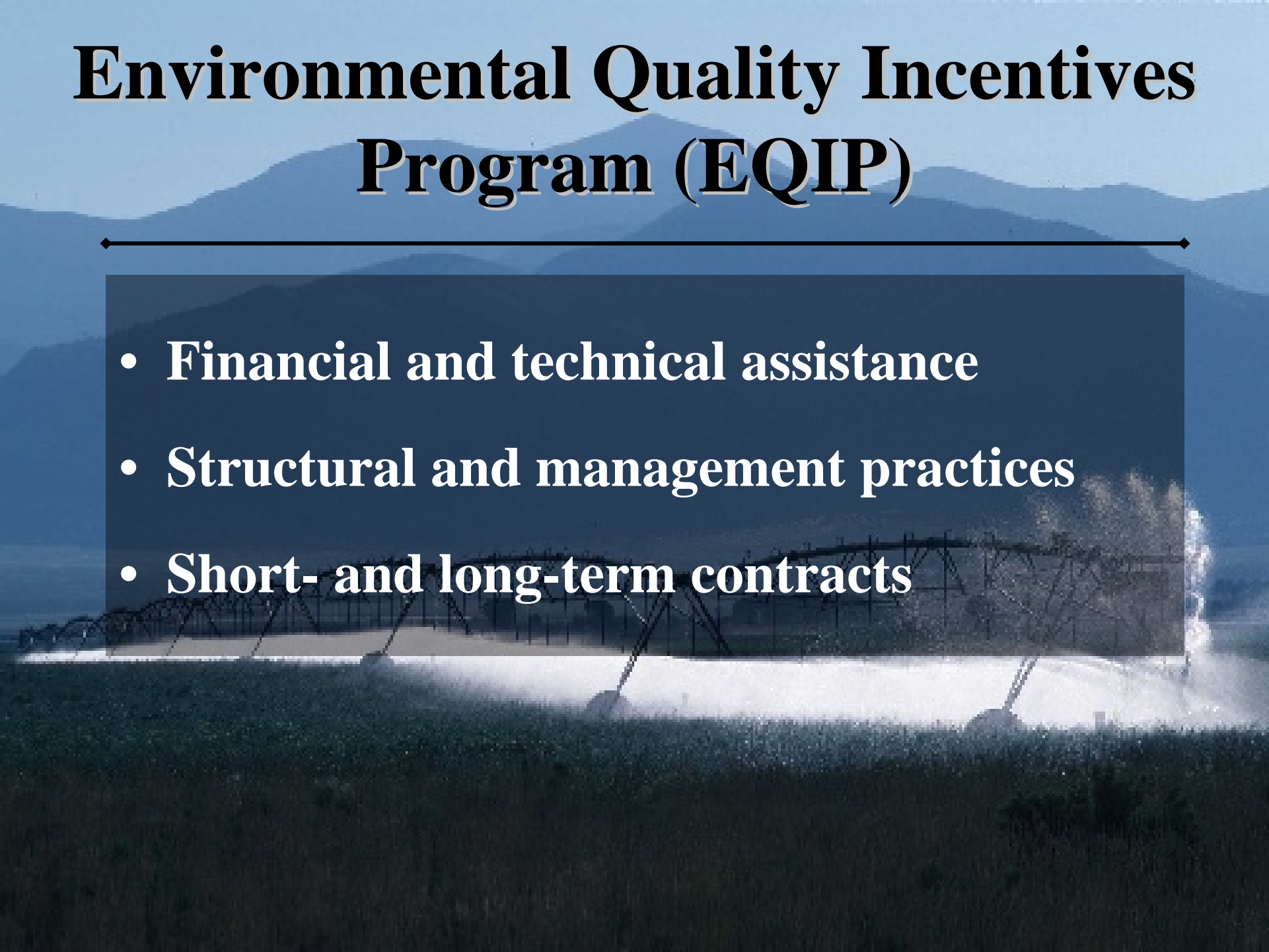


Cost-Share Programs

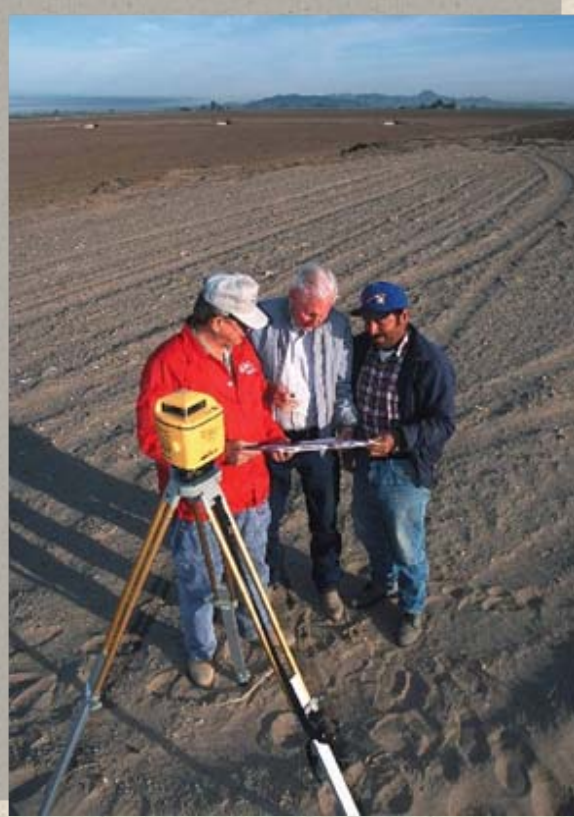


Environmental Quality Incentives Program (EQIP)

- **Financial and technical assistance**
- **Structural and management practices**
- **Short- and long-term contracts**



Environmental Quality Incentives Program (EQIP)



- Cost-share at 50 percent, some higher
- Additional cost-share for limited resource producers and beginning farmers and ranchers

Environmental Quality Incentives Program (EQIP)

Resource issues addressed through EQIP include:

- Soil health
- Grazing land health
- Water quality/
quantity
- Wildlife habitat



Environmental Quality Incentives Program (EQIP)

EQIP practices may include:

- Improved irrigation systems
- Animal waste facilities
- Grazing management systems including water development and fencing



Environmental Quality Incentives Program (EQIP)

EQIP Program Activities			
YEAR	# Applications Received	# Applications Approved	\$ Applications Approved
2002	6,024	1,370	\$11 M
2003	2,601	582	\$17 M
2004	3,328	1,058	\$29 M
Grand Totals	11,953	3,010	\$58 M

EQIP Ground and Surface Water Conservation (GSWC)

- Provides cost-share under EQIP
- Promotes ground and surface water conservation activities
- Focuses on net water savings

EQIP Ground and Surface Water Conservation (GSWC)

GSWC practices may include:

- Less water-intensive crop production
- Conversion to non-irrigated crop or grazing land use
- Efficient irrigation systems



EQIP Ground and Surface Water Conservation (GSWC)

EQIP Ground and Surface Water Conservation Program Activities

YEAR	# Applications Received	# Applications Approved	\$ Applications Approved
2002	256	49	\$3.6 M
2003	428	119	\$3.8 M
2004	450	116	\$3.3 M
Grand Totals	1,134	284	\$10.7 M

Wildlife Habitat Incentives Program (WHIP)

- **Restores native habitats**
- **Emphasizes declining species**
- **Statewide proposals**
- **Fosters partnerships**



Wildlife Habitat Incentives Program (WHIP)

WHIP practices may include:

- Shallow water development
- Riparian area protection
- Stream bank restorations
- Wildlife habitat plantings



Wildlife Habitat Incentives Program (WHIP)

WHIP Program Activities			
YEAR	# Applications Received	# Applications Approved	\$ Applications Approved
2002	145	21	\$450,000
2003	147	35	\$400,000
2004	146	52	\$575,000
Grand Totals	438	108	\$1.425 M



Easement Programs



Farm and Ranchland Protection Program (FRPP)

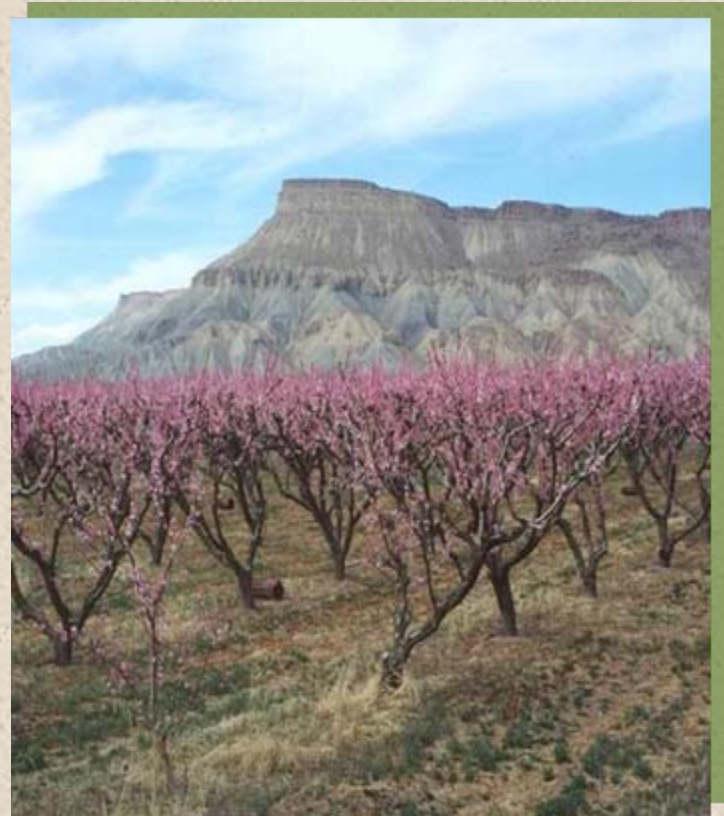
- Protects farms and ranches from conversion to non-agricultural uses
- Provides matching funds to qualifying organizations



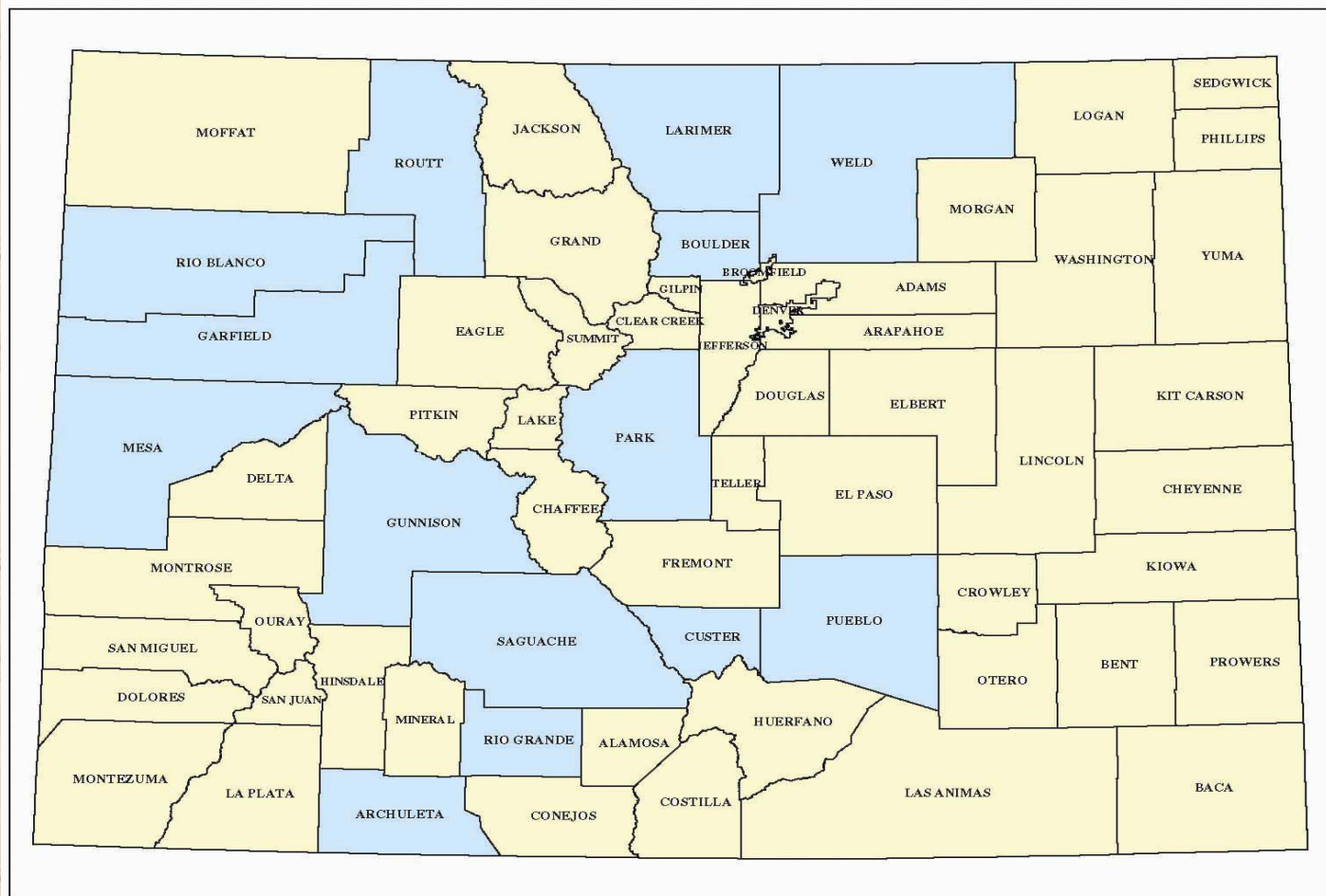
Farm and Ranchland Protection Program (FRPP)

Program priorities include:

- Prime and statewide-important soils
- Historical and archaeological resource protection



Farm and Ranchland Protection Program (FRPP) *Project Locations Map*



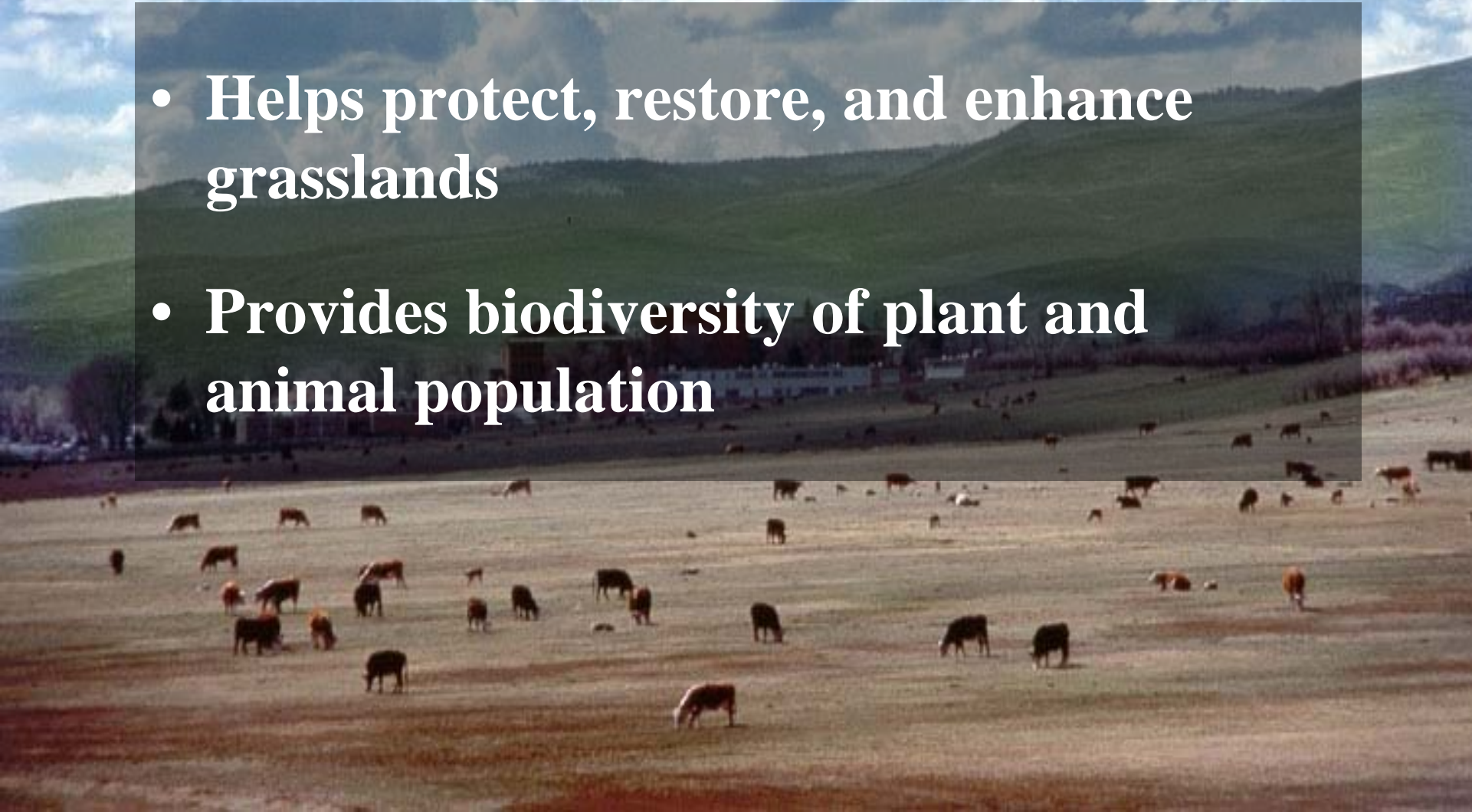
 Indicates county locations with existing FRPP projects.

Farm and Ranchland Protection Program (FRPP)

FRPP Program Activities			
YEAR	# Projects	\$ FRPP	# Acres
2002	10	\$2.1 M	5,200
2003	13	\$3.4 M	4,400
2004	11	\$3.4 M	6,400
Grand Totals	34	\$8.9 M	16,000

Grassland Reserve Program (GRP)

- Helps protect, restore, and enhance grasslands
- Provides biodiversity of plant and animal population



Grassland Reserve Program (GRP)



Enrollment Options

Easements

- Permanent
- 30-Year

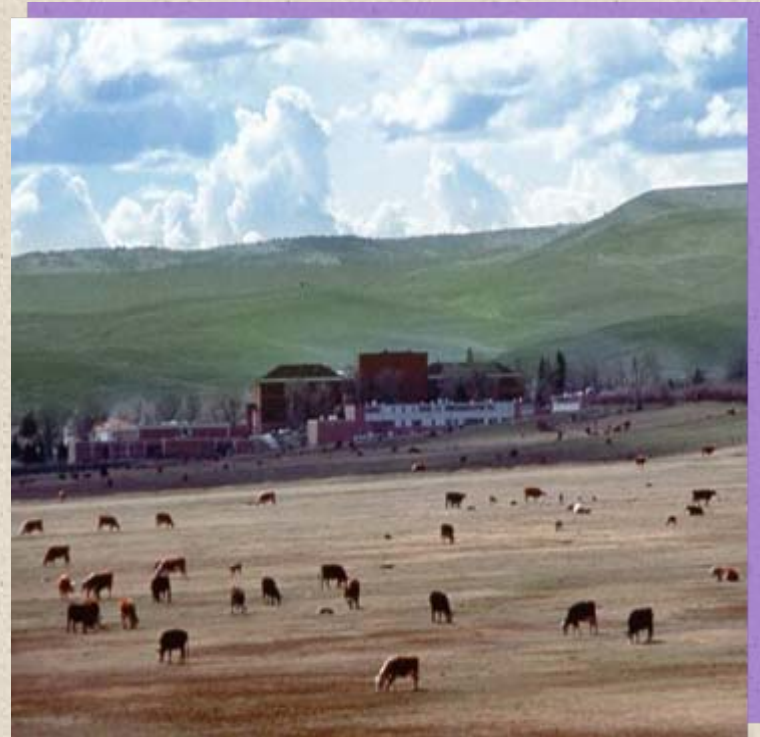
Agreements

- 10, 15, 20, and 30-year rental agreements
- Restoration agreements

Grassland Reserve Program (GRP)

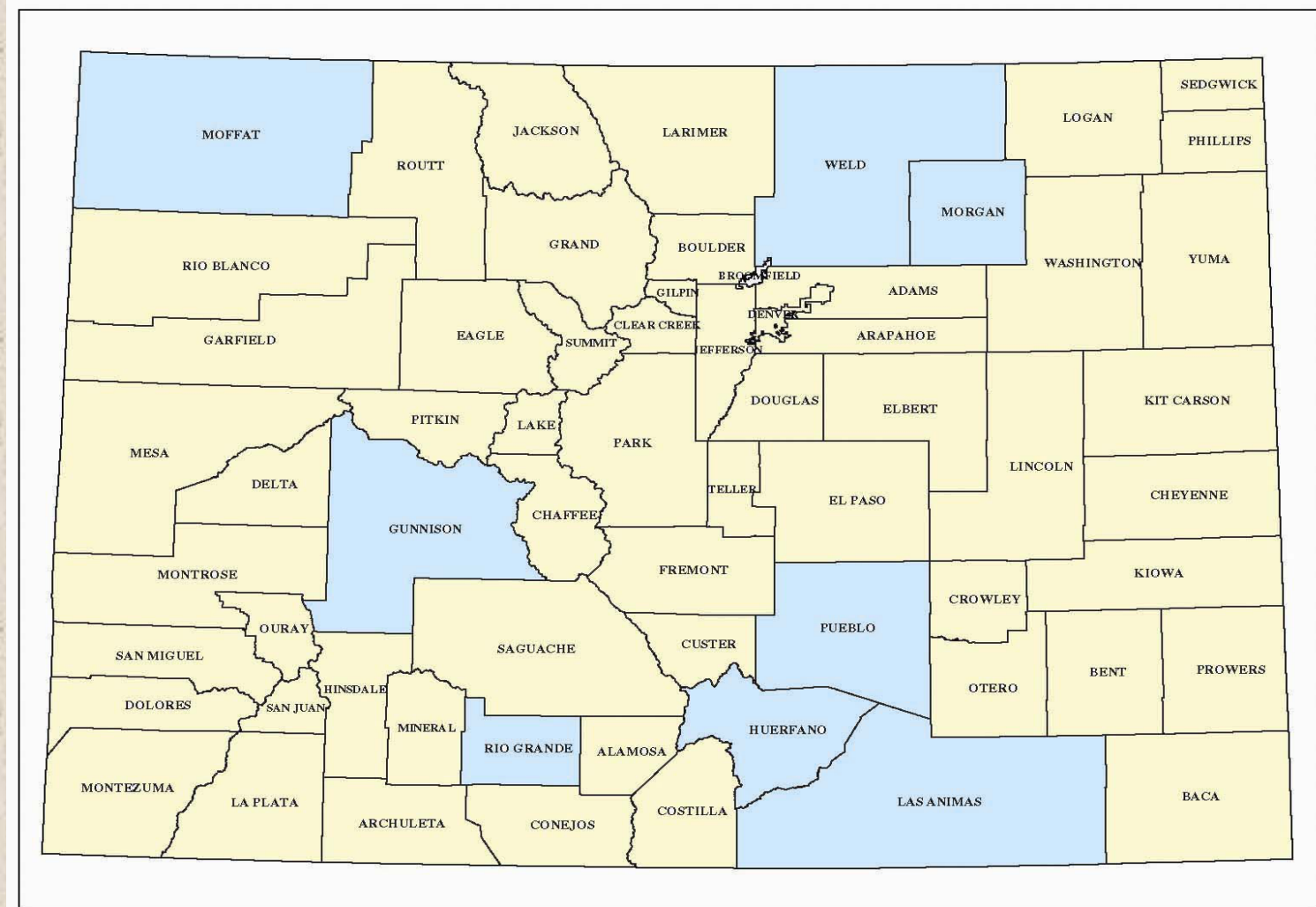
Program priorities include:

- Protection from threat of conversion
- Maintaining working agricultural lands
- Maintaining biodiversity



Grasslands Reserve Program (GRP)

Project Locations Map



 Indicates county locations with existing GRP projects.

Grassland Reserve Program (GRP)

GRP Program Activities				
YEAR	# Applications Received	# Applications Approved	\$ Applications Approved	# Acres Funded
2003	375	4	\$1.3 M	4,200
2004	311	7	\$1.8 M	8,300
Grand Totals	686	11	\$3.1 M	12,500

Wetlands Reserve Program (WRP)

- **Voluntary program to restore wetlands**
- **Provides financial and technical assistance**
- **Offers easements and restorations**

Wetlands Reserve Program (WRP)

Three program participation options:

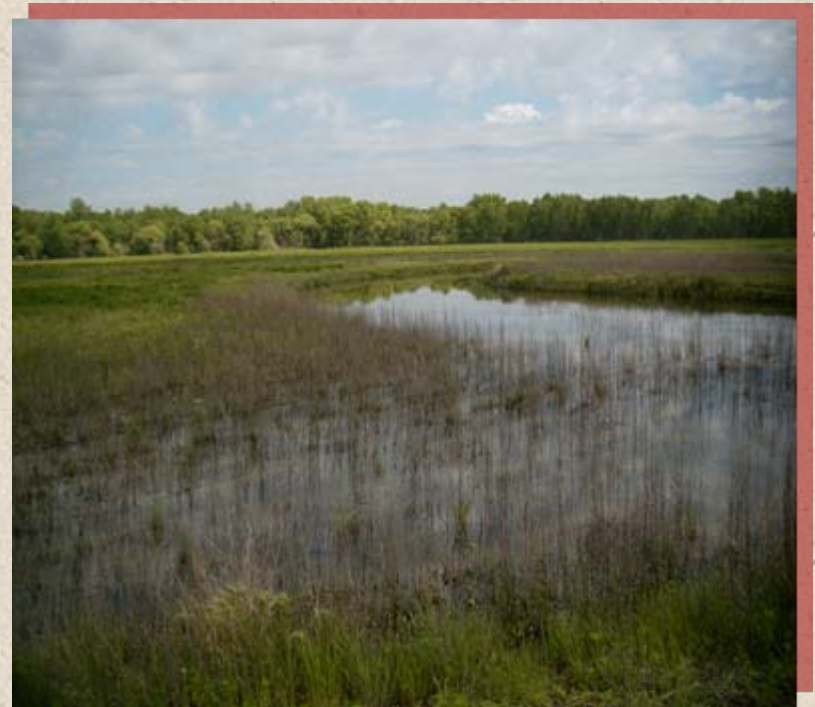
- 10-year restoration cost-share agreements
- 30-year conservation easements
- Permanent easements



Wetlands Reserve Program (WRP)

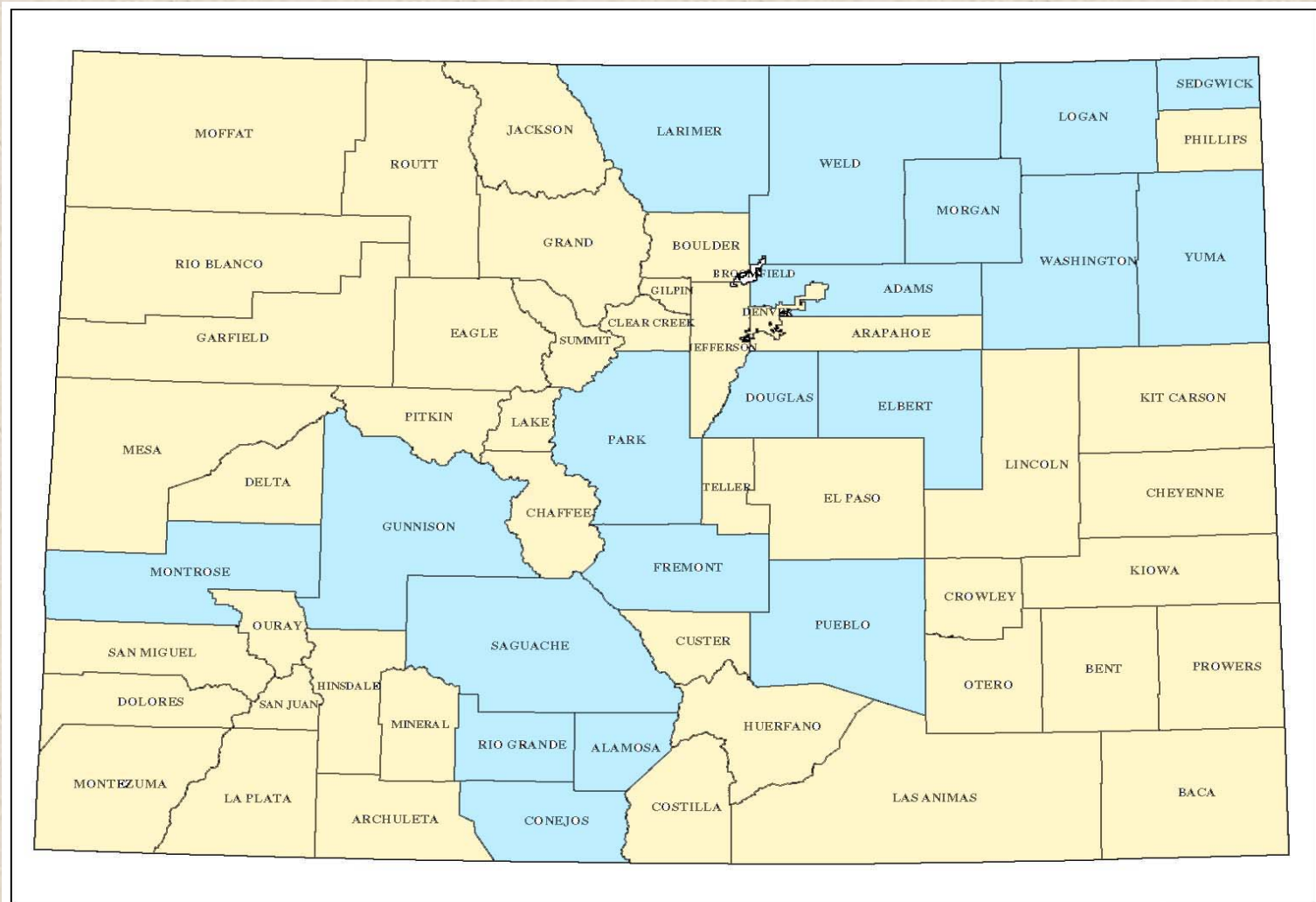
Program priorities include:

- Restoration, protection, and enhancement of wetlands
- Migratory bird habitat



Wetlands Reserve Program (WRP)

Project Locations Map



 Indicates county locations with existing WRP projects.

Wetlands Reserve Program (WRP)

WRP Program Activities

10-Year Restoration Cost-Share Agreements, 30-Year Easements,
and Permanent Easements

YEAR	# Applications Received	# Applications Approved	\$ Applications Approved	# Acres Funded
2002	10	10	\$1.5 M	2,100
2003	17	16	\$2.9 M	2,300
2004	17	15	\$3.9 M	2,300
Grand Totals	44	41	\$8.3 M	6,700



Stewardship Program



Conservation Security Program (CSP)

- **Rewards producers who have practiced good land stewardship**
- **Provides incentives for those who want to do more**
- **Rewards the best and motivates the rest**

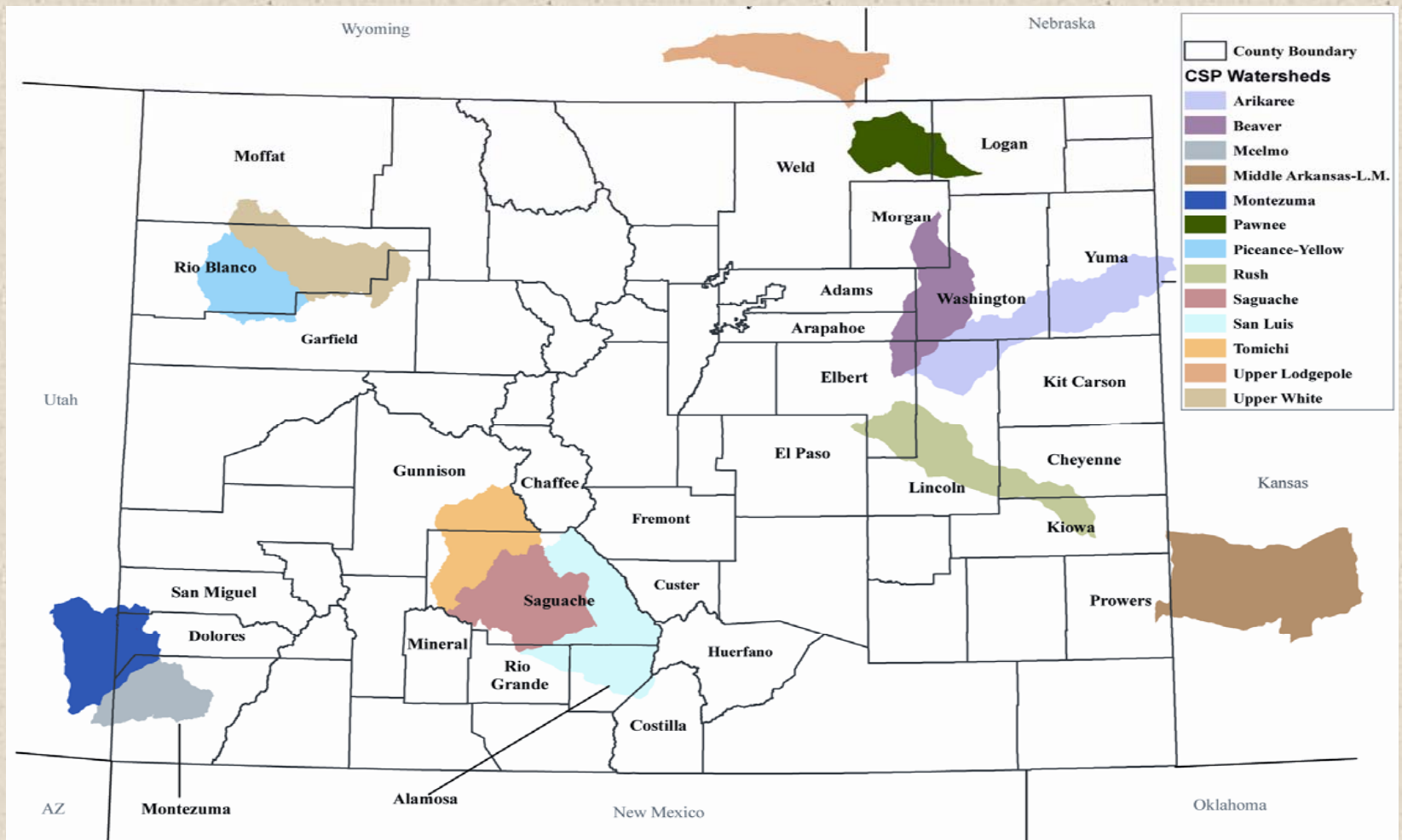
Conservation Security Program (CSP)

- Participation based on a rotating watershed basis
- One-eighth of all eligible participants able to apply for the program annually



Conservation Security Program

Colorado CSP 2005 Priority Watersheds



Conservation Security Program (CSP)

All agricultural land use types are eligible:

- Orchards/vineyards
- Rangeland
- Pasture
- Crops



Conservation Security Program (CSP)

Three Tiers*

Tier I

have addressed
water quality
and soil quality
on part of the
operation

Tier II

have addressed
water quality and
soil quality on
the entire
operation; agree
to address one
other resource
concern

Tier III

have addressed
all resources on
the entire
operation and
agree to
additional
activities

***all participants agree to address any additional sign-up announcement requirements**

Conservation Security Program (CSP)

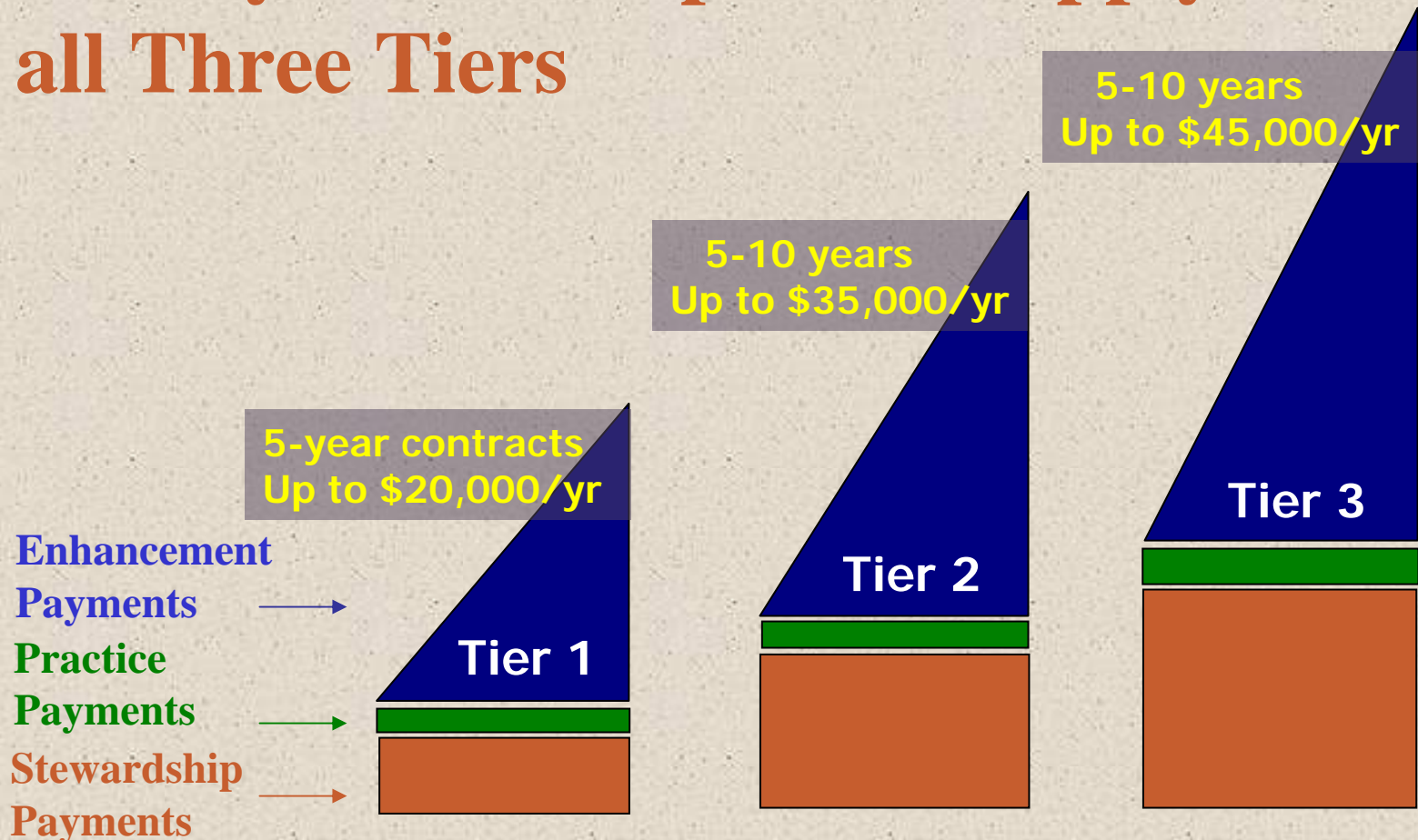
CSP payments:

- Stewardship
- Existing practice maintenance
- New practices
- Enhancements



Conservation Security Program (CSP)

**All Payment Components Apply to
all Three Tiers**



Conservation Security Program (CSP)

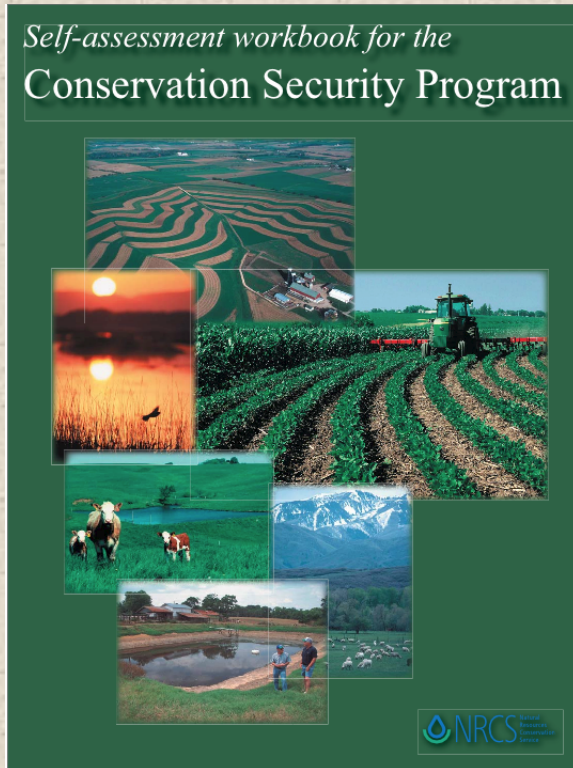
Sample basic eligibility questions:

- Are you in compliance with Highly Erodible Land and Wetland Conservation provisions of the Farm Bill?
- Do you own or have control of the land you intend to enroll in CSP for the length of the proposed 5- to 10-year contract period?
- Do you have at least two years of records for your crop or grazing management system?

You must answer “yes” to all of these and additional questions before you are considered eligible for CSP. Visit www.co.nrcs.usda.gov/programs/CSP/CSPQuestions.html to view all basic eligibility questions.

Conservation Security Program (CSP)

A self-screening process for producers



- Eligibility criteria
- Benchmark inventory
- Hard copy and web versions

Conservation Security Program (CSP)

NRCS will...

- Determine eligibility
- Conduct follow-up interview
- Place application in tier and enrollment category
- Select successful applicants





United States Department of Agriculture
Natural Resources Conservation Service

**The Natural Resources Conservation Service
provides leadership in a partnership effort to
help people conserve, maintain, and improve
our natural resources and environment.**

The U.S. Department of Agriculture (USDA) prohibits discrimination in its programs on the basis of race, color, national origin, gender, religion, age, disability, political beliefs, sexual orientation, and marital or family status (not all prohibited bases apply to all programs). Persons with disabilities who require alternative means for communication of program information (Braille, large print, audiotape, etc.) should contact USDA's TARGET Center at (202) 720-2600 (voice and TDD).

To file a complaint of discrimination, write USDA, Director, Office of Civil Rights, Room 326W, Whitten Building, 14th and Independence Avenue, SW, Washington, DC 20250-9410, or call (202) 720-5964 (voice or TDD).

USDA is an equal opportunity provider and employer.